

North Elevation - Channel Letters, LED Illuminated

INDIVIDUAL ALUMINUM FORMED LETTERS.

TRANSLUCENT ACRYLIC FACES ILLUMINATED WITH LED LIGHT CLUSTERS HOUSED INSIDE EACH SHAPE. FACES HELD IN WITH TRIMCAP RETAINERS. MOUNTING RAIL FRAMEWORK FABRICATED FROM 2" SQ. WELDED EXTRUDED ALUMINUM TUBE. FRAMEWORK INSTALLED ON TOP OF AWNING USING APPROPRIATE FASTENERS TO BE DETERMINED.

EACH 4" DEEP FABRICATED LETTER IS MOUNTED TO SUPPORT RAILS USING A MINIMUM OF (4) #10 x 3" HEX HEAD SCREWS.

REMOTE ELECTRIC & POWER UNITS. **UL LISTED #E153594** PRIMARY ELECTRIC POWER BROUGHT TO SITE BY OTHERS.

COLORS:

CLIENT VERIFICATION REQUIRED PRIOR TO PRODUCTION

LETTER FACES -

TRANSLUCENT RED, 3M #3630-33 WITH WHITE OUTLINE

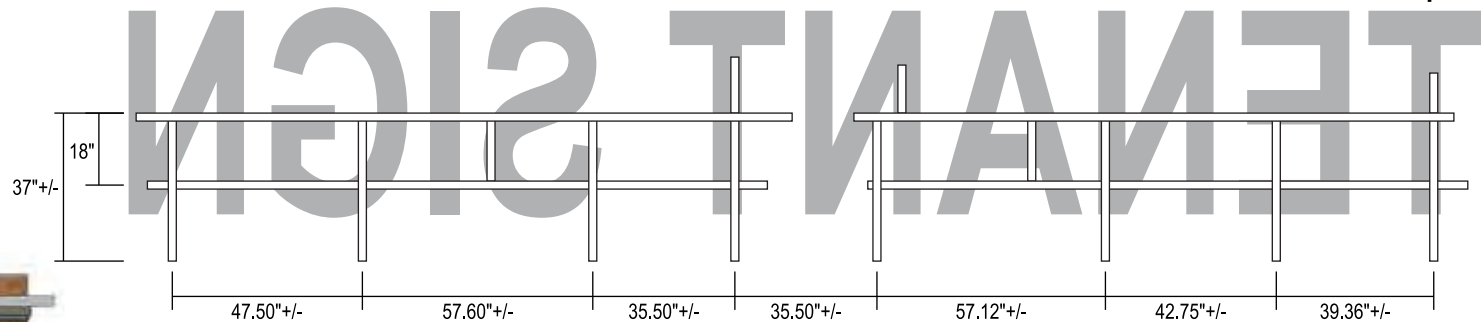
TRIMCAP & RETURNS - TO BE DETERMINED



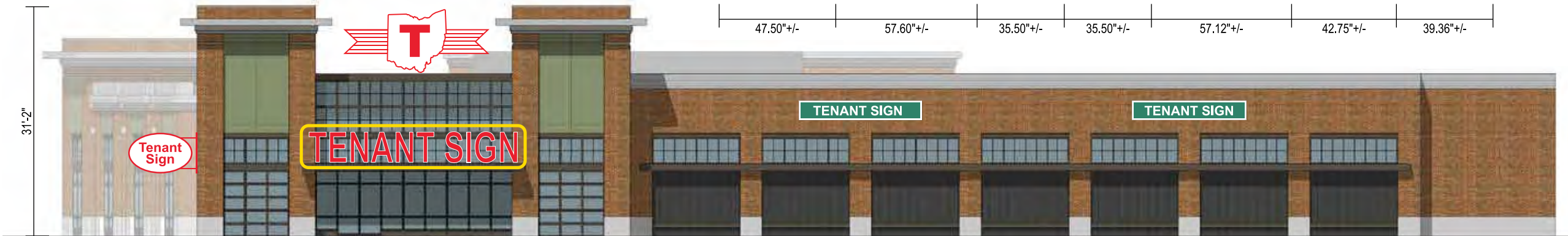
SCALE 1/4" = 1'

28'-2.75" +/-

121.73 Sq.Ft.



NOT TO SCALE



SCALE 1/16" = 1'



CLIENT APPROVAL _____ DATE _____

PRODUCTION ART REQUIRED
Colors on Printed Documents May Vary

PROJECT NAME THURBER VILLAGE
LOCATION _____
CITY COLUMBUS STATE OHIO

REVISION _____

SALES BMS
DESIGN RAF
SIZE 14

DATE 4-5-22
SCALE Noted
PROJECT# 22212

North Elevation - Pan-Formed Logo Cloud, LED Illuminated

INDIVIDUAL ALUMINUM FORMED ELEMENTS.

TRANSLUCENT ACRYLIC FACES ILLUMINATED WITH LED LIGHT CLUSTERS HOUSED INSIDE EACH SHAPE. FACES HELD IN WITH TRIMCAP RETAINERS.

MOUNTING RAIL FRAMEWORK FABRICATED FROM (4) 4" SQ. AND (6) 2" SQ. WELDED EXTRUDED ALUMINUM TUBES.

ADDITIONAL SUPPORTS AS NEEDED.

FRAMEWORK INSTALLED ON TOP OF ROOF USING APPROPRIATE FASTENERS TO BE DETERMINED.

FIELD SURVEY REQUIRED.

EACH 4" DEEP ELEMENT IS MOUNTED TO SUPPORT RAILS USING A MINIMUM OF (4) 1/4 x 2" HEX HEAD SCREWS.

REMOTE ELECTRIC & POWER UNITS. **UL LISTED #E153594**

PRIMARY ELECTRIC POWER BROUGHT TO SITE BY OTHERS.

COLORS:

CLIENT VERIFICATION REQUIRED PRIOR TO PRODUCTION

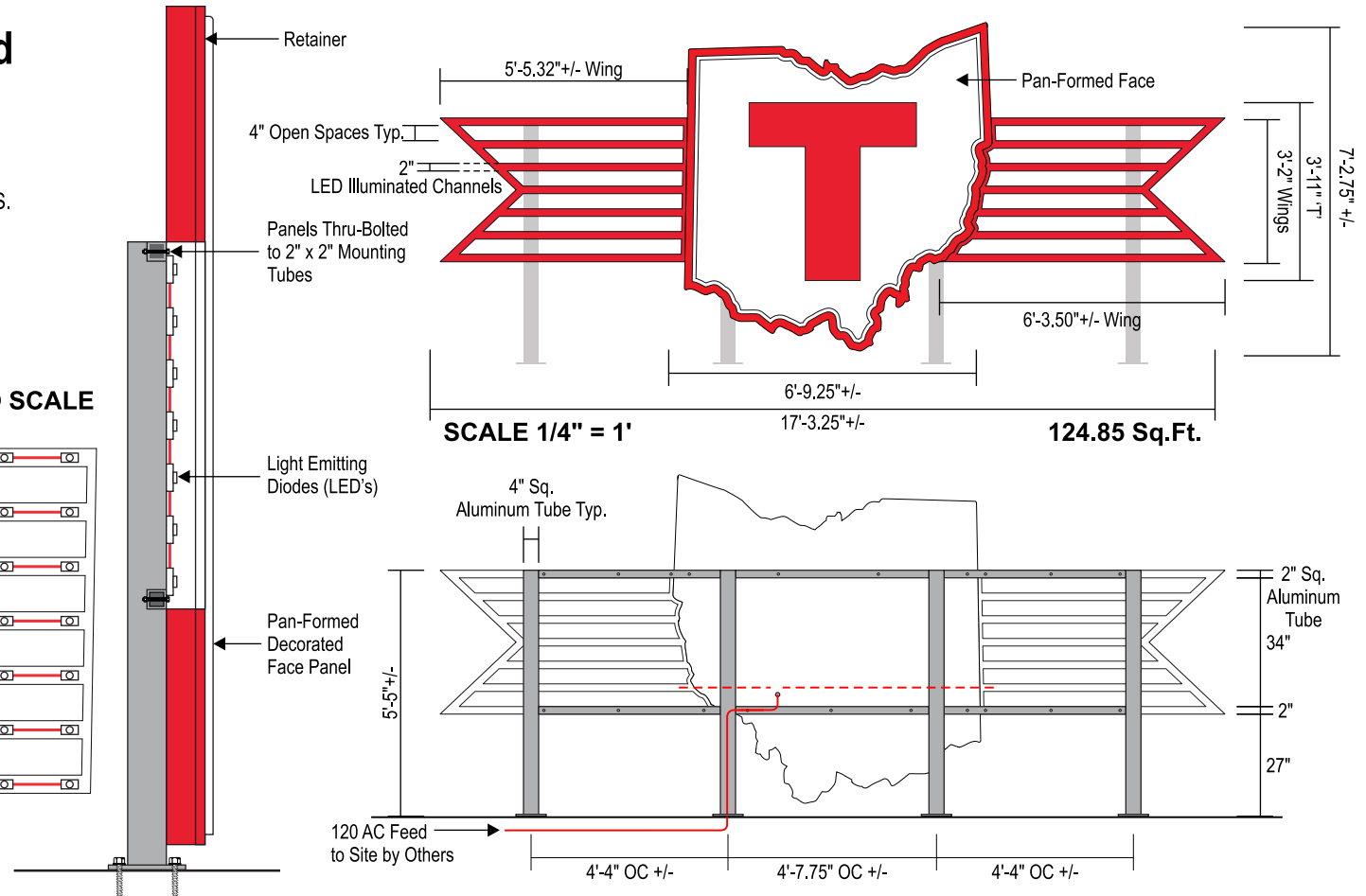
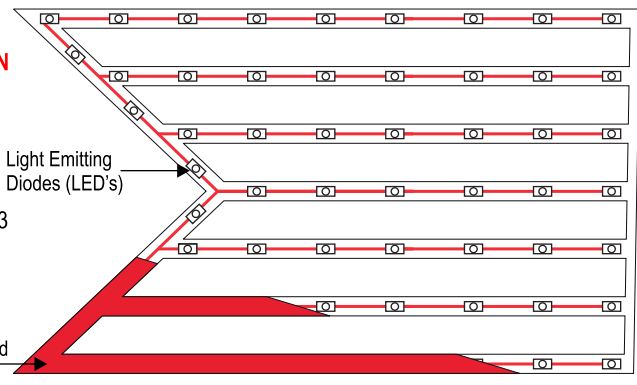
PAN FACE - TRANSLUCENT WHITE

GRAPHICS - TRANSLUCENT RED, 3M #3630-33

"WING" FACES - TRANSLUCENT RED, 3M #3630-33

TRIMCAP, RETAINERS & RETURNS - RED, PTM 3M #3630-33

FRAMEWORK - BRUSHED ALUMINUM, MAP #41342SP



SCALE 1/16" = 1'



CLIENT APPROVAL _____ DATE _____

PRODUCTION ART REQUIRED
Colors on Printed Documents May Vary

PROJECT NAME THURBER VILLAGE
LOCATION _____
CITY COLUMBUS STATE OHIO

REVISION _____

SALES BMS
DESIGN RAF
SIZE 14

DATE 4-5-22
SCALE Noted
PROJECT# 22212

North Elevation - (2) Face Lit Wall Cabinets, LED Illuminated

CABINETS ARE .090" THICK ALUMINUM OVER WELDED ALUMINUM FRAMEWORK.

TRANSLUCENT, VACUUM-FORMED ACRYLIC FACES ILLUMINATED WITH LED LIGHT CLUSTERS HOUSED INSIDE EACH SHAPE. FACES HELD IN WITH RETAINERS.

4" DEEP CABINET IS MOUNTED TO BRICK FASCIA USING A MINIMUM OF (8) 1/4 x 3" TAPCON SCREWS.

REMOTE ELECTRIC & POWER UNITS. **UL LISTED #E153594**

PRIMARY ELECTRIC POWER BROUGHT TO SITE BY OTHERS.

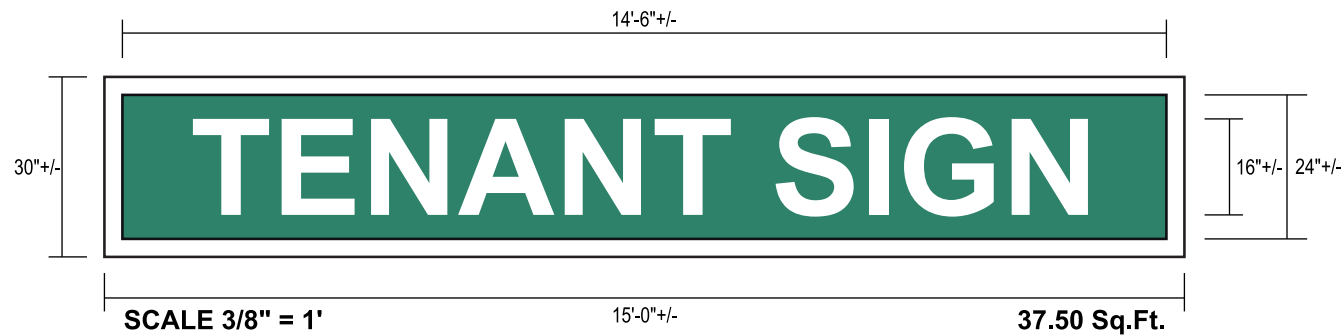
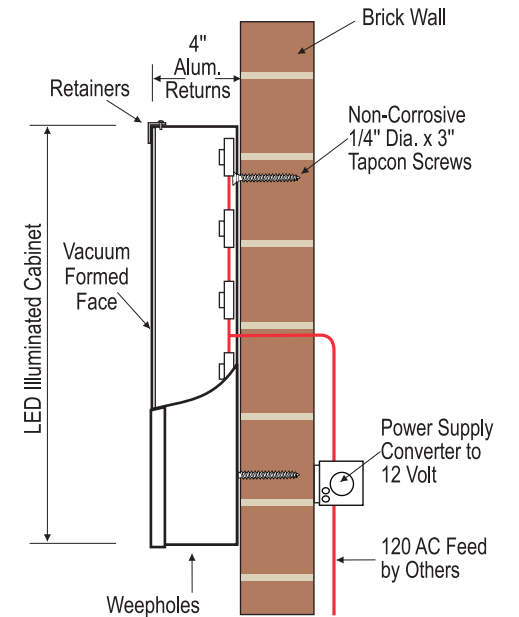
COLORS:

CLIENT VERIFICATION REQUIRED PRIOR TO PRODUCTION

VACUUM-FORMED FACE - TRANSLUCENT GREEN

GRAPHICS - TRANSLUCENT WHITE

"TRIMCAP, RETAINERS & RETURNS - PTM TRANSLUCENT GREEN



SCALE 1/16" = 1'

Page 3

© COPYRIGHT 2022

SIGNCOM, INC. • 527 WEST RICH STREET • COLUMBUS, OHIO 43215 • TEL: 614-228-9999 • FAX: 614-228-4326 • info@signcominc.com



CLIENT APPROVAL _____ DATE _____

PRODUCTION ART REQUIRED
Colors on Printed Documents May Vary

PROJECT NAME THURBER VILLAGE
LOCATION _____
CITY COLUMBUS STATE OHIO

REVISION _____

SALES BMS
DESIGN RAF
SIZE 14

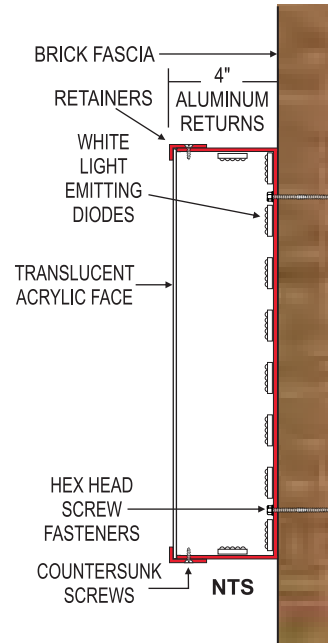
DATE 4-5-22
SCALE Noted
PROJECT# 22212

South Elevation - Channel Letters, LED Illuminated

INDIVIDUAL ALUMINUM FORMED LETTERS.
 TRANSLUCENT ACRYLIC FACES ILLUMINATED WITH LED LIGHT
 CLUSTERS HOUSED INSIDE EACH SHAPE.
 FACES HELD IN WITH TRIMCAP RETAINERS.
 EACH 4" DEEP FABRICATED LETTER IS MOUNTED TO BRICK
 FASCIA USING A MINIMUM OF (4) #10 x 3" HEX HEAD SCREWS.
 REMOTE ELECTRIC & POWER UNITS. **UL LISTED #E153594**
 PRIMARY ELECTRIC POWER BROUGHT TO SITE BY OTHERS.

COLORS:
CLIENT VERIFICATION REQUIRED PRIOR TO PRODUCTION

LETTER FACES -
 TRANSLUCENT RED, 3M #3630-33 WITH WHITE OUTLINE
 TRIMCAP & RETURNS - PTM RED, 3M #3630-33



SCALE 1/16" = 1'



CLIENT APPROVAL _____ DATE _____

PRODUCTION ART REQUIRED
Colors on Printed Documents May Vary

PROJECT NAME THURBER VILLAGE
 LOCATION _____
 CITY COLUMBUS STATE OHIO

REVISION _____

SALES BMS
 DESIGN RAF
 SIZE 14

DATE 4-5-22
 SCALE Noted
 PROJECT# 22212

East Elevation - D.F. Blade Sign, LED Illuminated

.090" THICK ALUMINUM OVER WELDED ALUMINUM FRAMEWORK.

1/8" THICK ROUTED ALUMINUM FACES WITH 3/4" THICK PUSH-THRU LETTERS.

LETTERS ILLUMINATED WITH LED LIGHT CLUSTERS HOUSED INSIDE CABINET.

FACES HELD IN WITH RETAINERS.

MOUNTING BRACKET FABRICATED FROM (2) 2" SQ. EXTRUDED ALUMINUM TUBES, THRU-WELDED TO 1/4" THICK MOUNTING PLATE AND CABINET FRAMEWORK.

MOUNTING BRACKET INSTALLED ON BRICK FASCIA USING (6) 1/4" x 3"+/- POWERS WEDGE BOLT SCREW ANCHORS EQUALLY SPACED. MINIMUM DEPTH INTO BRICK, 2".

REMOTE ELECTRIC & POWER UNITS. **UL LISTED #E153594**

PRIMARY ELECTRIC POWER BROUGHT TO SITE BY OTHERS.

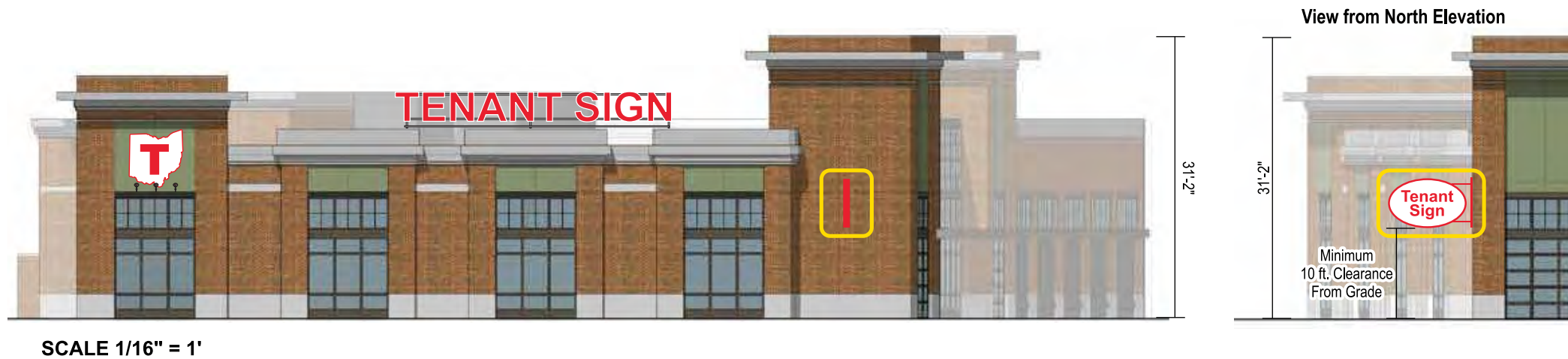
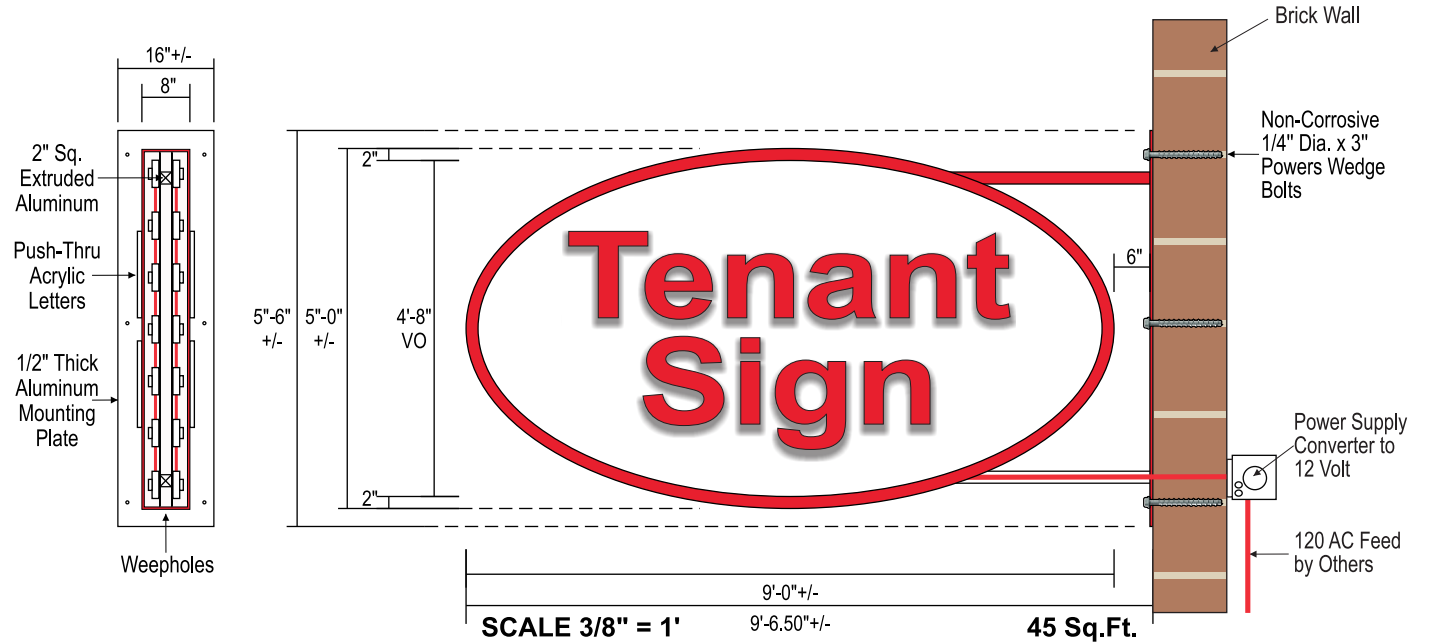
COLORS:

CLIENT VERIFICATION REQUIRED PRIOR TO PRODUCTION

FACE PANELS - WHITE

GRAPHICS - TRANSLUCENT RED, 3M #3630-33

TRIMCAP, RETAINERS, MOUNTING BRACKET & RETURNS - RED, PTM 3M #3630-33



East Elevation - Non-Illuminated Channel Letters

INDIVIDUAL ALUMINUM FORMED LETTERS.
 TRANSLUCENT ACRYLIC FACES HELD IN WITH TRIMCAP RETAINERS.
 MOUNTING RAIL FRAMEWORK FABRICATED FROM 1" SQ. WELDED EXTRUDED ALUMINUM TUBE. FRAMEWORK
 INSTALLED ON TOP OF AWNING USING APPROPRIATE FASTENERS TO BE DETERMINED.
 4" DEEP FABRICATED LETTERS, WITH RE-INFORCED BACKS, SECURED TO FRAMEWORK USING 1/4" x 1-1/2" SCREW
 FASTENERS, (4) FASTENERS PER LETTER MINIMUM.
 CONSTRUCTION AND INSTALLATION OF SIGN ELEMENTS TO COMPLY WITH NEC ARTICLE 600.
 PRIMARY ELECTRIC POWER BROUGHT TO SITE BY OTHERS.
 EXTERNAL ILLUMINATION AND AWNING BY OTHERS.



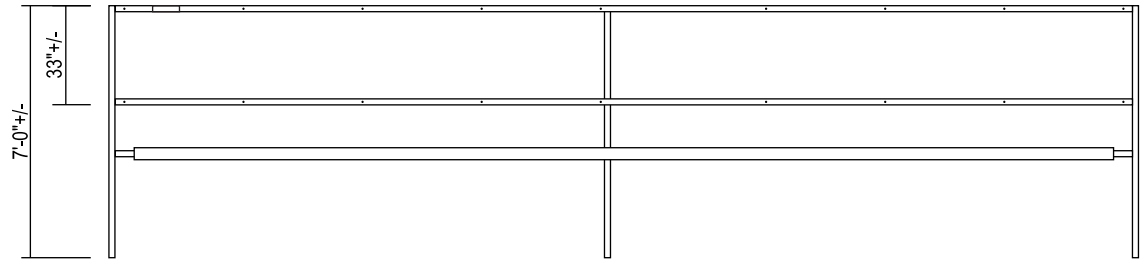
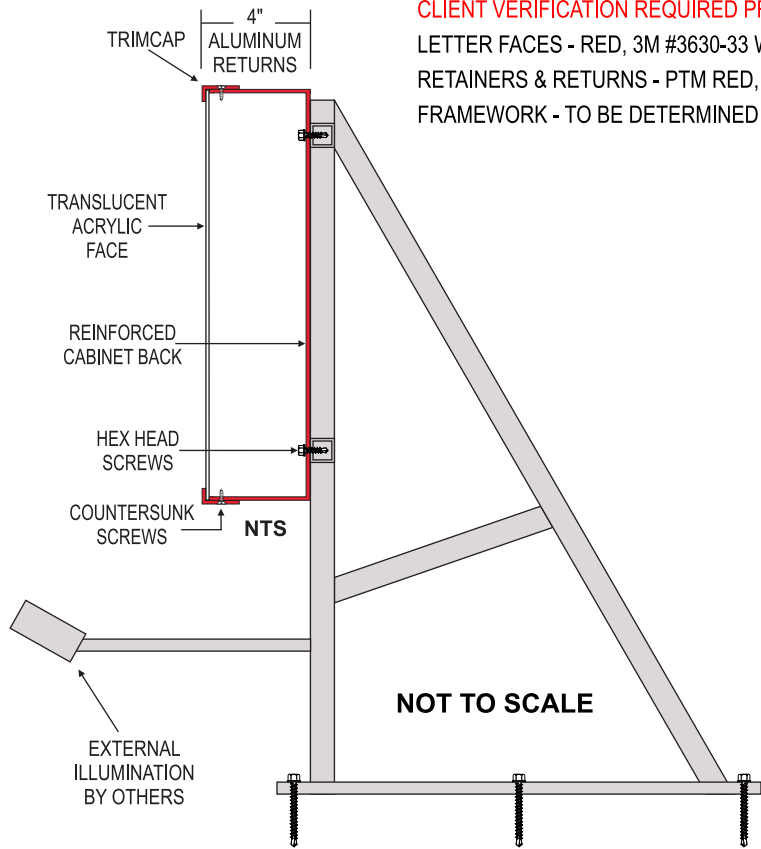
SCALE 3/16" = 1'

29'-10" +/-

95.61 Sq.Ft.

COLORS:

CLIENT VERIFICATION REQUIRED PRIOR TO PRODUCTION
 LETTER FACES - RED, 3M #3630-33 WITH WHITE OUTLINE
 RETAINERS & RETURNS - PTM RED, 3M #3630-33
 FRAMEWORK - TO BE DETERMINED



SCALE 1/16" = 1'



CLIENT APPROVAL _____ DATE _____

PRODUCTION ART REQUIRED
 Colors on Printed Documents May Vary

PROJECT NAME THURBER VILLAGE
 LOCATION _____
 CITY COLUMBUS STATE OHIO

REVISION 5-12-22

SALES BMS
 DESIGN RAF
 SIZE 14

DATE 4-5-22
 SCALE Noted
 PROJECT# 22212

East Elevation - Wall Mounted Logo Sign, External Gooseneck Lightgting

.090" THICK ALUMINUM DDN PANEL OVER WELDED ALUMINUM FRAMEWORK.
 TRANSLUCENT ACRYLIC FACE HELD IN WITH RETAINERS.
 HIGH PERFORMANCE TRANSLUCENT VINYL GRAPHICS APPLIED SMOOTH.
 MOUNTING CLIPS INSTALLED USING APPROPRIATE FASTENERS FOR EIFS FASCIA.
 DDN PANEL SECURED TO MOUNTING CLIPS USING COUNTERSUNK SCREWS.
 SIGN EXTERNALLY ILLUMINATED WITH GOOSENECK LIGHTING INSTALLED BY OTHERS.

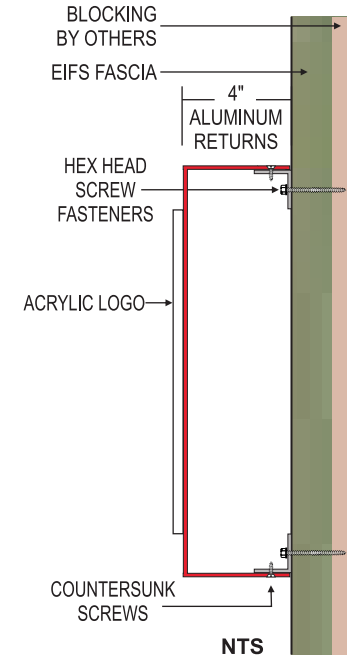
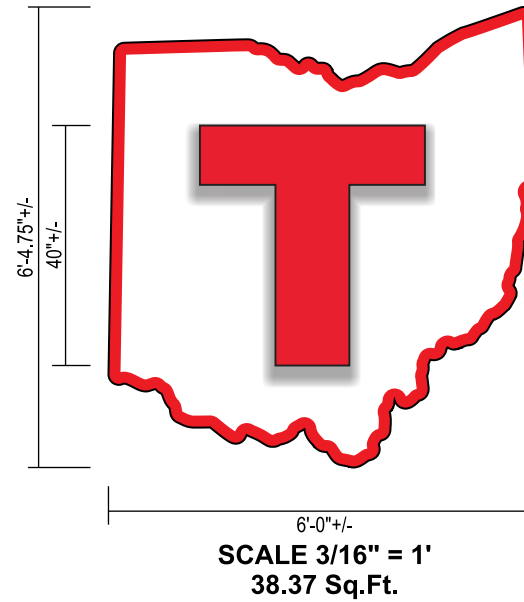
COLORS:

CLIENT VERIFICATION REQUIRED PRIOR TO PRODUCTION

FACE PANEL - WHITE, MAP #42202SP WITH PTM RED, 3M #3630-33 BORDER

"T" - TRANSLUCENT RED, 3M #3630-33

RETAINERS & RETURNS - PTM RED, 3M #3630-33



SCALE 1/16" = 1'

North Elevation

Projecting Blade Sign, LED Illuminated

CONSTRUCTION AND INSTALLATION OF SIGN ELEMENTS TO COMPLY WITH
NEC ARTICLE 600

.090" THICK WELDED ALUMINUM SIGN CABINET WITH REINFORCED BACK.

FACE PANELS ARE 1/8" THICK ROUTED OUT ALUMINUM FOR 3/4" THICK

CNC ROUTED ACRYLIC PUSH THRU GRAPHIC ELEMENTS.

GRAPHICS ARE ILLUMINATED WITH LED LIGHT CLUSTERS

HOUSED INSIDE CABINET.

BLADE SIGN INSTALLED ON BRICK FASCIA USING (12) 3/8" x LENGTH TBD,

(4) IN EACH MOUNTING PLATE.

REMOTE ELECTRIC AND POWER UNITS. **UL LISTED #E153594**

POWER DISCONNECT SWITCH INSTALLED.

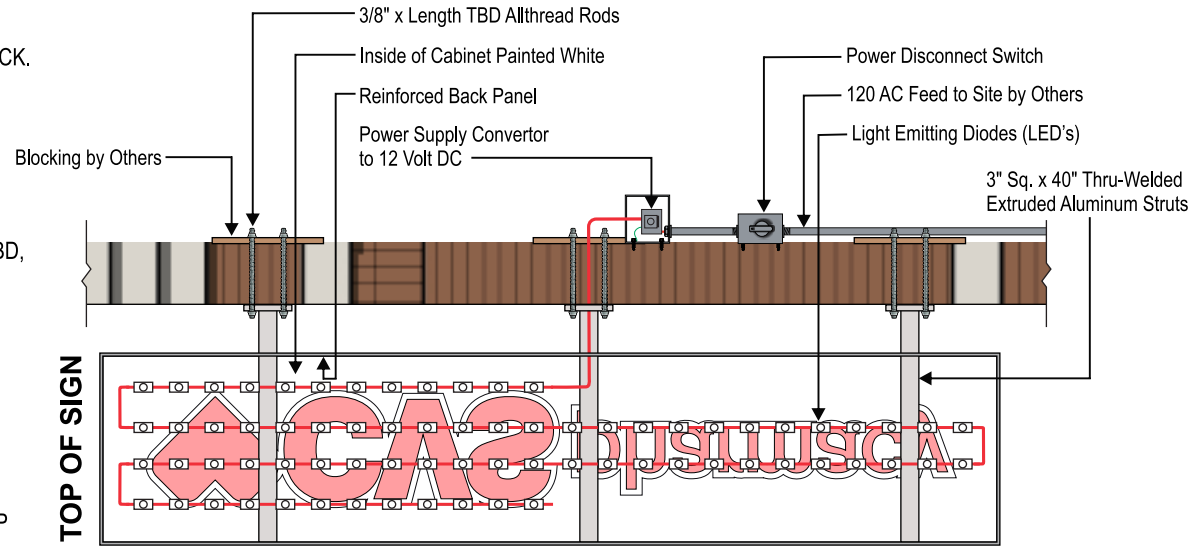
PRIMARY ELECTRIC POWER BROUGHT TO SITE BY OTHERS.

BLOCKING BY OTHERS.

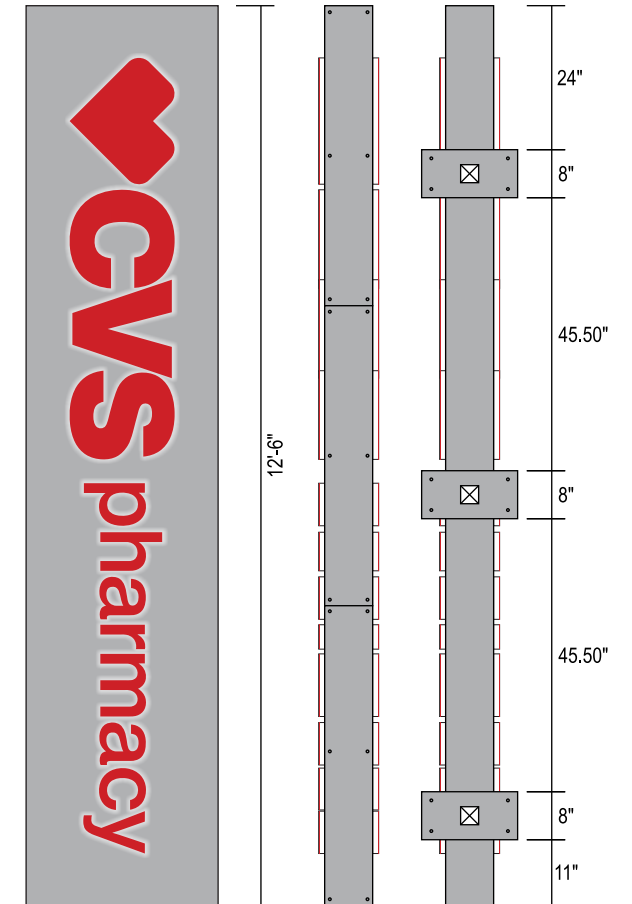
COLORS: CLIENT VERIFICATION REQUIRED PRIOR TO PRODUCTION

CABINET, MOUNTING BRACKETS - BRUSHED ALUMINUM, MAP #41342SP

GRAPHICS - TRANSLUCENT RED, 3M #3630-33



SCALE 3/8" = 1'



SCALE 3/8" = 1'



Buttles Avenue Elevation

SCALE 1/16" = 1'

Building B Elevation

© COPYRIGHT 2022

SIGNCOM, INC. • 527 WEST RICH STREET • COLUMBUS, OHIO 43215 • TEL: 614-228-9999 • FAX: 614-228-4326 • info@signcominc.com



CLIENT APPROVAL _____ DATE _____

PRODUCTION ART REQUIRED
 Colors on Printed Documents May Vary

PROJECT NAME THURBER VILLAGE
 LOCATION CVS PHARMACY
 CITY COLUMBUS STATE OHIO

REVISION _____

SALES BMS
 DESIGN RAF
 SIZE 14

DATE 4-4-22
 SCALE Noted
 PROJECT# 22210

East Elevation

Projecting Blade Sign, LED Illuminated

CONSTRUCTION AND INSTALLATION OF SIGN ELEMENTS TO COMPLY WITH
NEC ARTICLE 600

.090" THICK WELDED ALUMINUM SIGN CABINET WITH REINFORCED BACK.

FACE PANELS ARE 1/8" THICK ROUTED OUT ALUMINUM FOR 3/4" THICK

CNC ROUTED ACRYLIC PUSH THRU GRAPHIC ELEMENTS.

GRAPHICS ARE ILLUMINATED WITH LED LIGHT CLUSTERS

HOUSED INSIDE CABINET.

BLADE SIGN INSTALLED ON BRICK FASCIA USING (12) 3/8" x LENGTH TBD,

(4) IN EACH MOUNTING PLATE.

REMOTE ELECTRIC AND POWER UNITS. **UL LISTED #E153594**

POWER DISCONNECT SWITCH INSTALLED.

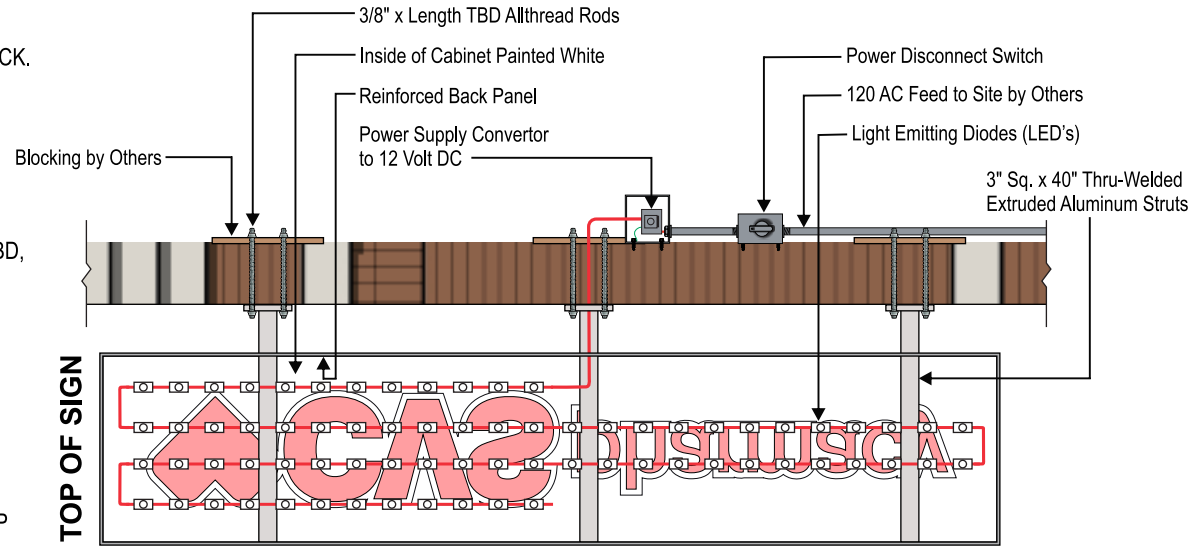
PRIMARY ELECTRIC POWER BROUGHT TO SITE BY OTHERS.

BLOCKING BY OTHERS.

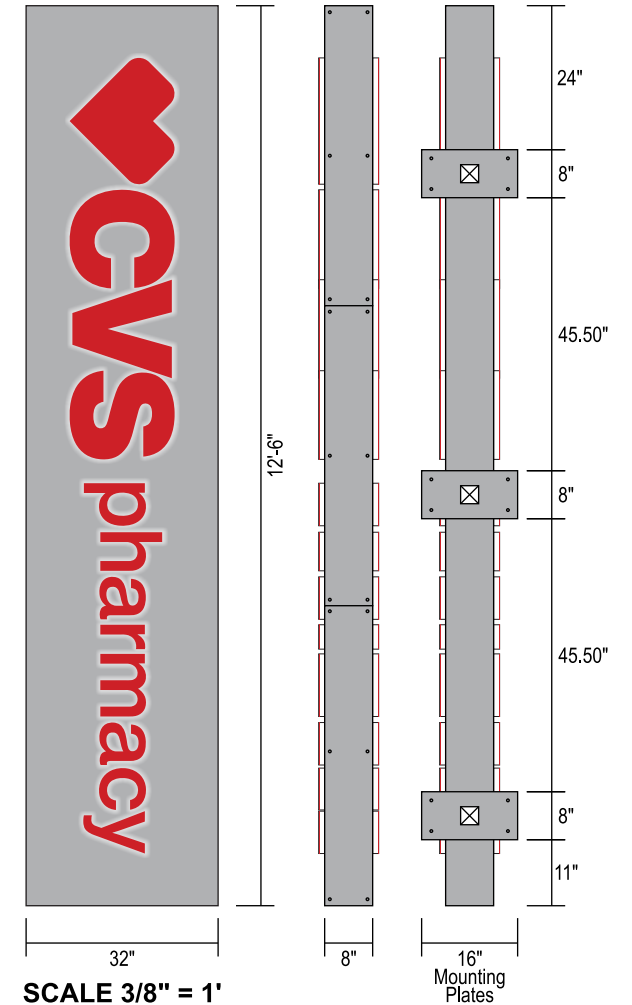
COLORS: CLIENT VERIFICATION REQUIRED PRIOR TO PRODUCTION

CABINET, MOUNTING BRACKETS - BRUSHED ALUMINUM, MAP #41342SP

GRAPHICS - TRANSLUCENT RED, 3M #3630-33



SCALE 3/8" = 1'



SCALE 3/8" = 1'



SCALE 1/16" = 1'

Neil Avenue Elevation

East Elevation A

Channel Letters, LED Illuminated

INDIVIDUAL ALUMINUM FORMED LETTERS.

TRANSLUCENT ACRYLIC FACES ILLUMINATED WITH LED LIGHT CLUSTERS HOUSED INSIDE EACH SHAPE. FACES HELD IN WITH TRIMCAP RETAINERS.

EACH 4" DEEP FABRICATED LETTER IS MOUNTED TO **BRICK FASCIA** USING A MINIMUM OF (4) #10 x 4" TAPCON SCREWS AND SPACERS.

REMOTE ELECTRIC & POWER UNITS. **UL LISTED #E153594**

PRIMARY ELECTRIC POWER BROUGHT TO SITE BY OTHERS.

COLORS: CLIENT VERIFICATION REQUIRED PRIOR TO PRODUCTION

LETTER & LOGO FACES - TRANSLUCENT RED, 3M #3630-33

TRIMCAP & RETURNS - TO BE DETERMINED



East Elevation B

Channel Letters, LED Illuminated

INDIVIDUAL ALUMINUM FORMED LETTERS.

TRANSLUCENT ACRYLIC FACES ILLUMINATED WITH LED LIGHT CLUSTERS HOUSED INSIDE EACH SHAPE. FACES HELD IN WITH TRIMCAP RETAINERS.

EACH 4" DEEP FABRICATED LETTER IS MOUNTED TO **AWNING FACE** USING A MINIMUM OF (4) #10 x 4" SCREWS AND SPACERS.

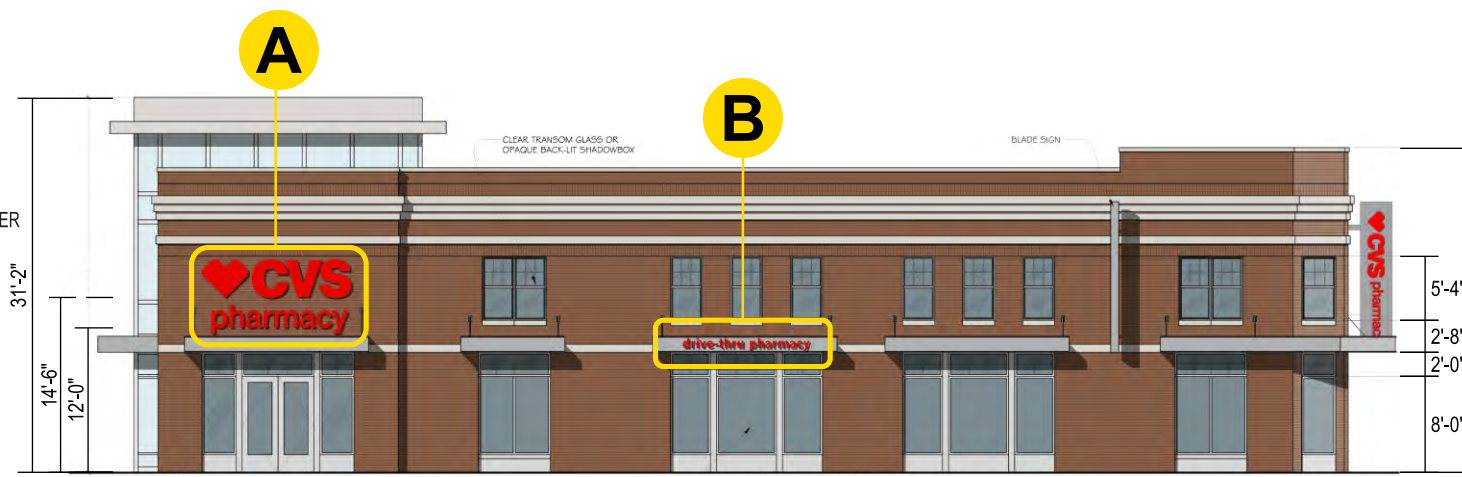
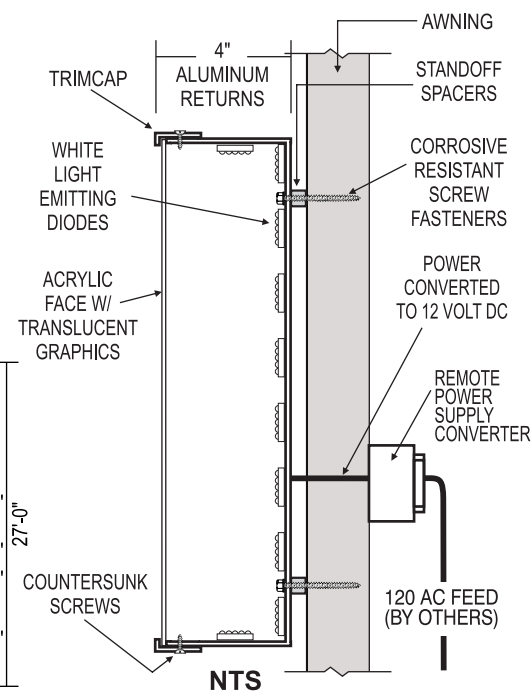
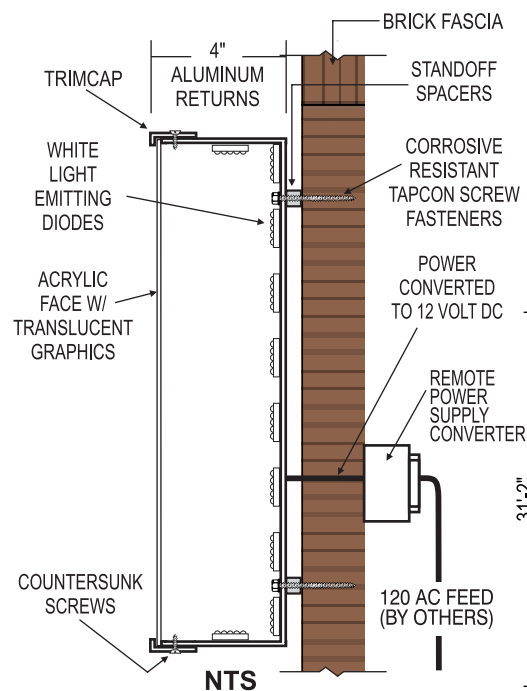
REMOTE ELECTRIC & POWER UNITS. **UL LISTED #E153594**

PRIMARY ELECTRIC POWER BROUGHT TO SITE BY OTHERS.

COLORS: CLIENT VERIFICATION REQUIRED PRIOR TO PRODUCTION

LETTER & LOGO FACES - TRANSLUCENT RED, 3M #3630-33

TRIMCAP & RETURNS - TO BE DETERMINED



SCALE 1/16" = 1'

Neil Avenue Elevation

South Elevation A

Channel Letters, LED Illuminated

INDIVIDUAL ALUMINUM FORMED LETTERS.

TRANSLUCENT ACRYLIC FACES ILLUMINATED WITH LED LIGHT CLUSTERS HOUSED INSIDE EACH SHAPE. FACES HELD IN WITH TRIMCAP RETAINERS.

EACH 4" DEEP FABRICATED LETTER IS MOUNTED TO **BRICK FASCIA** USING A MINIMUM OF (4) #10 x 4" TAPCON SCREWS AND SPACERS.

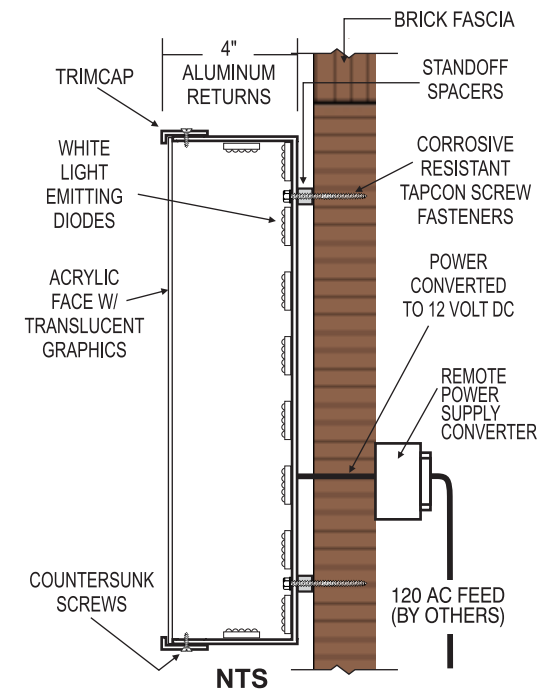
REMOTE ELECTRIC & POWER UNITS. **UL LISTED #E153594**

PRIMARY ELECTRIC POWER BROUGHT TO SITE BY OTHERS.

COLORS: CLIENT VERIFICATION REQUIRED PRIOR TO PRODUCTION

LETTER & LOGO FACES - TRANSLUCENT RED, 3M #3630-33

TRIMCAP & RETURNS - TO BE DETERMINED



SCALE 1/4" = 1'



SCALE 1/16" = 1'

Building B Elevation

Page 1

© COPYRIGHT 2022 SIGNCOM, INC. • 527 WEST RICH STREET • COLUMBUS, OHIO 43215 • TEL: 614-228-9999 • FAX: 614-228-4326 • info@signcominc.com



CLIENT APPROVAL _____ DATE _____

PRODUCTION ART REQUIRED
Colors on Printed Documents May Vary

PROJECT NAME THURBER VILLAGE
LOCATION CVS PHARMACY
CITY COLUMBUS STATE OHIO

REVISION _____

SALES BMS
DESIGN RAF
SIZE 14

DATE 4-4-22
SCALE Noted
PROJECT# 22210

South Elevation **B**

Channel Letters, LED Illuminated

INDIVIDUAL ALUMINUM FORMED LETTERS.

TRANSLUCENT ACRYLIC FACES ILLUMINATED WITH LED LIGHT CLUSTERS HOUSED INSIDE EACH SHAPE. FACES HELD IN WITH TRIMCAP RETAINERS.

EACH 4" DEEP FABRICATED LETTER IS MOUNTED TO **AWNING FACE** USING A MINIMUM OF (4) #10 x 4" TAPCON SCREWS AND SPACERS.

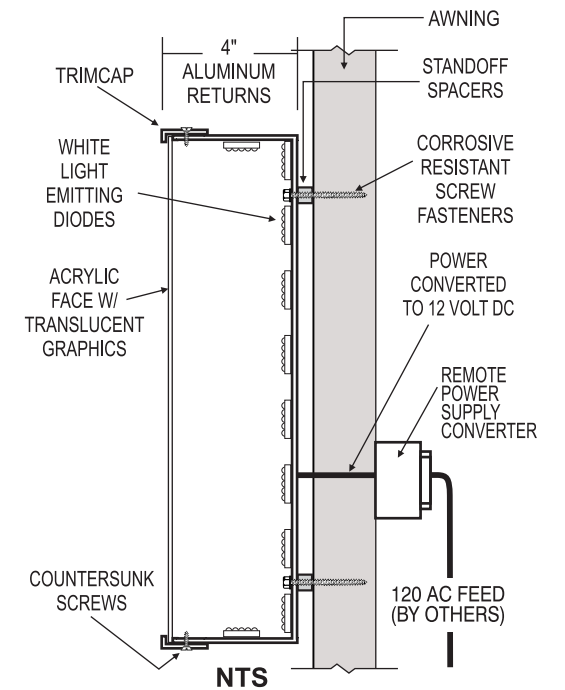
REMOTE ELECTRIC & POWER UNITS. **UL LISTED #E153594**

PRIMARY ELECTRIC POWER BROUGHT TO SITE BY OTHERS.

COLORS: CLIENT VERIFICATION REQUIRED PRIOR TO PRODUCTION

LETTER & LOGO FACES - TRANSLUCENT RED, 3M #3630-33

TRIMCAP & RETURNS - TO BE DETERMINED



SCALE 1/16" = 1'

Building B Elevation

Page 2